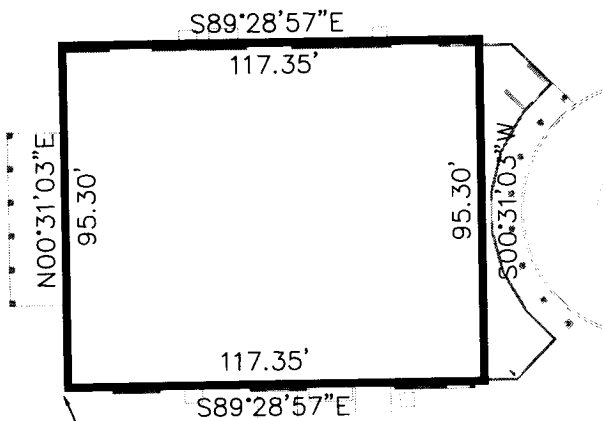


COMMON ELEMENT CLUBHOUSE
 THAT PORTION OF THE LANDS DESCRIBED IN OFFICIAL RECORDS BOOK 4619, PAGES 1709 THROUGH 1719 PUBLIC RECORDS OF LAKE COUNTY, FLORIDA AND LYING IN SECTION 6, TOWNSHIP 20 SOUTH, RANGE 26 EAST, LAKE COUNTY, FLORIDA, DESCRIBED AS FOLLOWS:
 COMMENCE AT THE NORTHWEST CORNER OF SAID SECTION 6 AS SHOWN ON THE FLORIDA DEPARTMENT OF ENVIRONMENTAL PROTECTION CERTIFIED CORNER RECORD NUMBER 073101, ON FILE WITH THE FLORIDA DEPARTMENT OF ENVIRONMENTAL PROTECTION, TALLAHASSEE, FLORIDA; THENCE RUN ON A BEARING RELATED TO FLORIDA STATE PLANE COORDINATES SYSTEM, EAST ZONE, S 00°59'22"W ALONG THE WEST LINE OF THE NORTHWEST 1/4 OF SAID SECTION 6, A DISTANCE OF 1591.90 FEET TO THE BEGINNING POINT OF SHANTI NIKETAN SENIOR CONDOS PHASE 3; THENCE RUN N 89°28'57"W ALONG THE NORTH LINE OF SAID PHASE 3 A DISTANCE OF 33.13 FEET TO THE NORTHWEST CORNER OF SAID PHASE 3; THENCE RUN S 01°00'00"W ALONG THE WEST LINE OF SAID PHASE 3 A DISTANCE OF 387.83 FEET; THENCE DEPARTING SAID WEST LINE OF THE LANDS DESCRIBED IN OFFICIAL RECORDS BOOK 4619, PAGES 1709 THROUGH 1719, AND CONTINUING ALONG THE WEST LINE OF SAID PHASE 3 THE FOLLOWING TWO COURSES: S 13°22'19"E A DISTANCE OF 80.76 FEET; THENCE RUN S 00°31'03"W A DISTANCE OF 92.06 FEET; THENCE DEPARTING SAID WEST LINE RUN S 89°28'57"E A DISTANCE OF 312.84 FEET TO THE POINT OF BEGINNING; THENCE RUN N 00°31'03"E A DISTANCE OF 95.30 FEET; THENCE RUN S 89°28'57"E A DISTANCE OF 117.35 FEET; THENCE RUN S 00°31'03"W A DISTANCE OF 95.30 FEET; THENCE RUN N 89°28'57"W A DISTANCE OF 117.35 FEET TO THE POINT OF BEGINNING.
 CONTAINING 11183.46 SQUARE FEET OR 0.26 ACRES MORE OR LESS.
 SUBJECT TO EASEMENTS, RIGHT OF WAYS AND MATTERS OF RECORD.



P.O.B.
 CLUBHOUSE
 CLUBHOUSE PLAN

SCALE: 1"=40'

NOTE: CLUBHOUSE CONSISTS
 OF COMMON ELEMENTS ONLY

REVISIONS
1
2
3
4
5
6
7
8
9
10

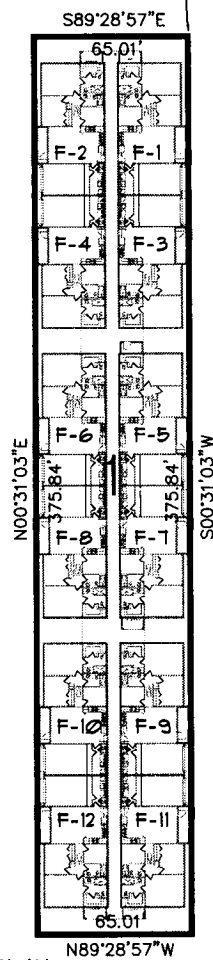
PROJ. NO.	DATE
31C130101	11.20.15

SHANTINIKETAN 3, A CONDOMINIUM SECTION 06, TOWNSHIP 20 SOUTH RANGE 26 EAST SHANTI NIKETAN SENIOR CONDOS PHASE 3 AND A LACON ON TOWN OF TALLAHASSEE, FLORIDA FOR THE SHANTI NIKETAN SENIOR CONDOS PHASE 3
--

RABITS & ROMANO ARCHITECTURE PLANNING AND DESIGN 1115 S. GULF BLVD., SUITE 111 TAMPA, FL 33606 TEL: 813.241.1111 FAX: 813.241.1111 WWW.RABITS-AND-ROMANO.COM

PROJECT NO. 31C130101

SHEET A-11 OF

P.O.B.
PHASE 1

PLOT PLAN

SCALE: 1"=60'

PHASE 1
WING F

THAT PORTION OF THE LANDS DESCRIBED IN OFFICIAL RECORDS BOOK 4619, PAGES 1709 THROUGH 1719 PUBLIC RECORDS OF LAKE COUNTY, FLORIDA AND LYING IN SECTION 6, TOWNSHIP 20 SOUTH, RANGE 26 EAST, LAKE COUNTY, FLORIDA, DESCRIBED AS FOLLOWS:

COMMENCE AT THE NORTHWEST CORNER OF SAID SECTION 6 AS SHOWN ON THE FLORIDA DEPARTMENT OF ENVIRONMENTAL PROTECTION CERTIFIED CORNER RECORD NUMBER 073101, ON FILE WITH THE FLORIDA DEPARTMENT OF ENVIRONMENTAL PROTECTION, TALLAHASSEE, FLORIDA; THENCE RUN ON A BEARING RELATED TO FLORIDA STATE PLANE COORDINATES SYSTEM, EAST ZONE, S 00°59'22"W ALONG THE WEST LINE OF THE NORTHWEST 1/4 OF SAID SECTION 6, A DISTANCE OF 1591.90 FEET TO THE BEGINNING POINT OF SHANTI NIKETAN SENIOR CONDOS PHASE 3; THENCE RUN N 89°28'57"W ALONG THE NORTH LINE OF SAID PHASE 3 A DISTANCE OF 33.13 FEET TO THE NORTHWEST CORNER OF SAID PHASE 3; THENCE RUN S 01°00'00"W ALONG THE WEST LINE OF SAID PHASE 3 AND THE WEST LINE OF AFORESAID LANDS DESCRIBED IN OFFICIAL RECORDS BOOK 4619, PAGES 1709 THROUGH 1719, A DISTANCE OF 387.83 FEET; THENCE DEPARTING SAID WEST LINE OF THE LANDS DESCRIBED IN OFFICIAL RECORDS BOOK 4619, PAGES 1709 THROUGH 1719, AND CONTINUING ALONG THE WEST LINE OF SAID PHASE 3 THE FOLLOWING TWO COURSES, S 13°22'19"E A DISTANCE OF 80.76 FEET; THENCE RUN S 00°31'03"W A DISTANCE OF 138.26 FEET; THENCE DEPARTING SAID WEST LINE RUN S 89°28'57"E A DISTANCE OF 402.01 FEET TO THE POINT OF BEGINNING; THENCE CONTINUE S 89°28'57"E A DISTANCE OF 65.01 FEET; THENCE RUN S 00°31'03"W A DISTANCE OF 375.84 FEET; THENCE RUN N 89°28'57"W A DISTANCE OF 65.01 FEET; THENCE RUN N 00°31'03"E A DISTANCE OF 375.84 FEET TO THE POINT OF BEGINNING.

CONTAINING 24433.36 SQUARE FEET OR 0.56 ACRES MORE OR LESS.
SUBJECT TO EASEMENTS, RIGHT OF WAYS AND MATTERS OF RECORD.

PHASE 1 - WING F
AREA CALCULATION

TYP. 2 BDR UNIT A/C AREA	=	1,124	SQ. FT.
TYP. 2 BDR UNIT GARAGE	=	254	SQ. FT.
TYP. 2 BDR UNIT TOTAL AREA	=	1,378	SQ. FT.

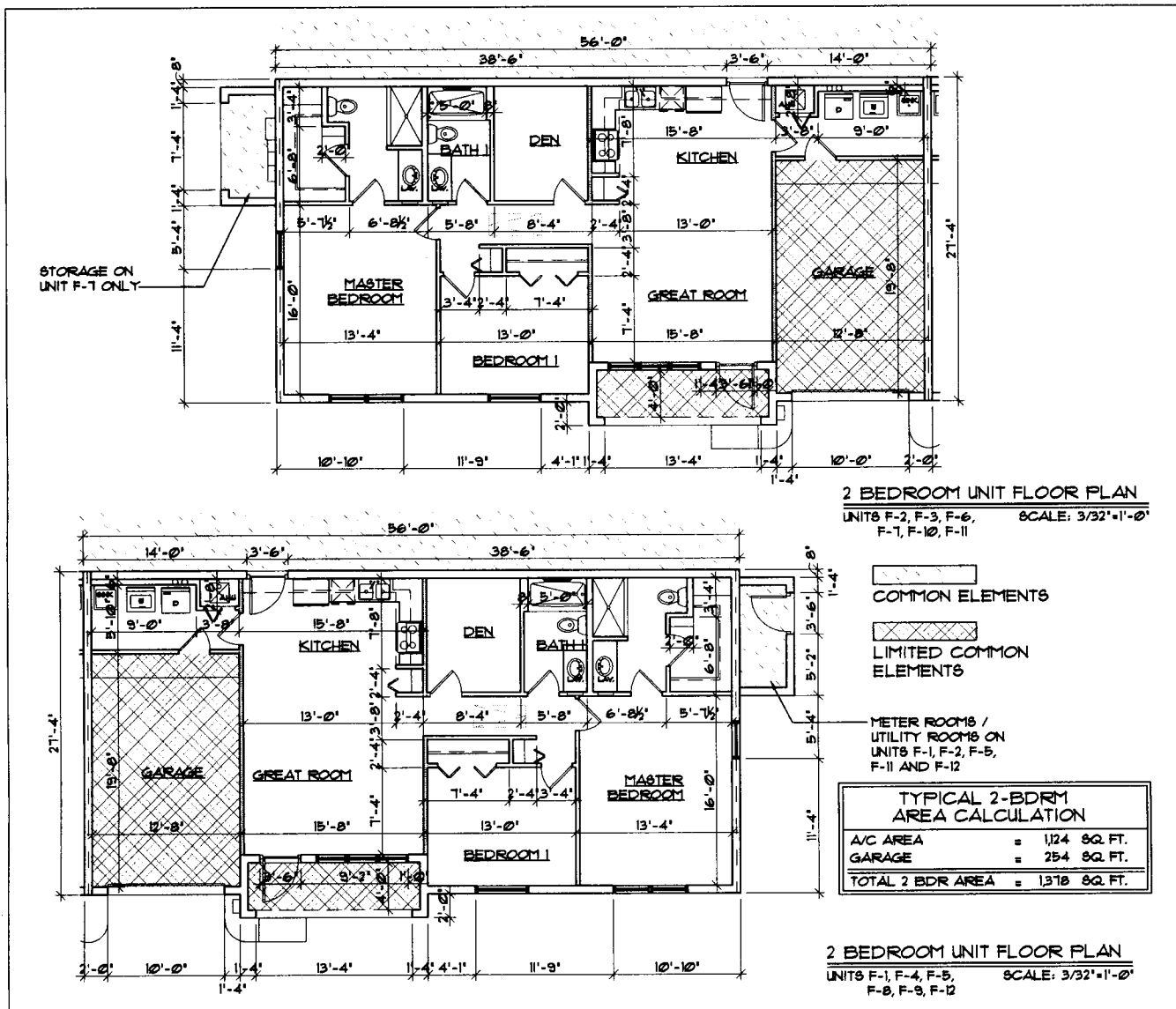
REVISIONS
1
2
3
4
5
6
7
8
9
10

PROJ. NO.	3101501.01
DATE	11-20-15

SHANTI NIKETAN 3, A CONDOMINIUM
RECORDS OF TOWNSHIP 20 SOUTH, RANGE 26 EAST, LAKE COUNTY, FLORIDA
SHANTI NIKETAN DEVELOPMENT, LLC
P.O. BOX 20-0001, WINTER HAVEN, FLORIDA 33884

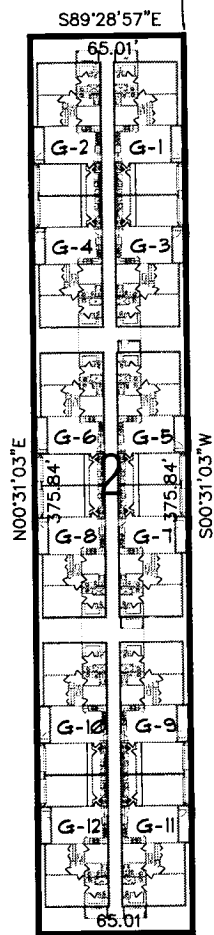
06120092VAV
PLANNING
DESIGN
RABITS & ROMANO
ARCHITECTURE
P.L.L.C.
1301 W. 10TH AVE.
SUITE 100
LAKE CHARLES, LA 70601
713.683.1100
WWW.RRARCHITECTURE.COM

SHEET
A-1
OF



REVISIONS	
1	
2	
3	
4	
5	
6	
7	
8	
9	
10	
11	
12	
13	
14	
15	
16	
17	
18	
19	
20	
21	
22	
23	
24	
25	
26	
27	
28	
29	
30	
31	
32	
33	
34	
35	
36	
37	
38	
39	
40	
41	
42	
43	
44	
45	
46	
47	
48	
49	
50	
51	
52	
53	
54	
55	
56	
57	
58	
59	
60	
61	
62	
63	
64	
65	
66	
67	
68	
69	
70	
71	
72	
73	
74	
75	
76	
77	
78	
79	
80	
81	
82	
83	
84	
85	
86	
87	
88	
89	
90	
91	
92	
93	
94	
95	
96	
97	
98	
99	
100	
101	
102	
103	
104	
105	
106	
107	
108	
109	
110	
111	
112	
113	
114	
115	
116	
117	
118	
119	
120	
121	
122	
123	
124	
125	
126	
127	
128	
129	
130	
131	
132	
133	
134	
135	
136	
137	
138	
139	
140	
141	
142	
143	
144	
145	
146	
147	
148	
149	
150	
151	
152	
153	
154	
155	
156	
157	
158	
159	
160	
161	
162	
163	
164	
165	
166	
167	
168	
169	
170	
171	
172	
173	
174	
175	
176	
177	
178	
179	
180	
181	
182	
183	
184	
185	
186	
187	
188	
189	
190	
191	
192	
193	
194	
195	
196	
197	
198	
199	
200	
201	
202	
203	
204	
205	
206	
207	
208	
209	
210	
211	
212	
213	
214	
215	
216	
217	
218	
219	
220	
221	
222	
223	
224	
225	
226	
227	
228	
229	
230	
231	
232	
233	
234	
235	
236	
237	
238	
239	
240	
241	
242	
243	
244	
245	
246	
247	
248	
249	
250	
251	
252	
253	
254	
255	
256	
257	
258	
259	
260	
261	
262	
263	
264	
265	
266	
267	
268	
269	
270	
271	
272	
273	
274	
275	
276	
277	
278	
279	
280	
281	
282	
283	
284	
285	
286	
287	
288	
289	
290	
291	
292	
293	
294	
295	
296	
297	
298	
299	
300	
301	
302	
303	
304	
305	
306	
307	
308	
309	
310	
311	
312	
313	
314	
315	
316	
317	
318	
319	
320	
321	
322	
323	
324	
325	
326	
327	
328	
329	
330	
331	
332	
333	
334	
335	
336	
337	
338	
339	
340	
341	
342	
343	
344	
345	
346	
347	
348	
349	
350	
351	
352	
353	
354	
355	
356	
357	
358	
359	
360	
361	
362	
363	
364	
365	
366	
367	
368	
369	
370	
371	
372	
373	
374	
375	
376	
377	
378	
379	
380	
381	
382	
383	
384	
385	
386	
387	
388	
389	
390	
391	
392	
393	
394	
395	
396	
397	
398	
399	
400	
401	
402	
403	
404	
405	
406	
407	
408	
409	
410	
411	
412	
413	
414	
415	
416	
417	
418	
419	
420	
421	
422	
423	
424	
425	
426	
427	
428	
429	
430	
431	
432	
433	
434	
435	
436	
437	
438	
439	
440	
441	
442	
443	
444	
445	
446	
447	
448	
449	
450	
451	
452	
453	
454	
455	
456	
457	
458	
459	
460	
461	
462	
463	
464	
465	
466	
467	
468	
469	
470	
471	
472	
473	
474	
475	
476	
477	
478	
479	
480	
481	
482	
483	
484	
485	
486	
487	
488	
489	
490	
491	
492	
493	
494	
495	
496	
497	
498	
499	
500	
501	
502	
503	
504	
505	
506	
507	
508	
509	
510	
511	
512	
513	
514	
515	
516	
517	
518	
519	
520	
521	
522	
523	
524	
525	
526	
527	
528	
529	
530	
531	
532	
533	
534	
535	
536	
537	
538	
539	
540	
541	
542	
543	
544	
545	
546	
547	
548	
549	
550	
551	
552	
553	
554	
555	
556	
557	
558	
559	
560	
561	
562	
563	
564	
565	
566	
567	
568	
569	
570	
571	
572	
573	
574	
575	
576	
577	
578	
579	
580	
581	
582	
583	
584	
585	
586	
587	
588	
589	
590	
591	
592	
593	
594	
595	
596	
597	
598	
599	
600	
601	
602	
603	
604	
605	
606	
607	
608	
609	
610	
611	
612	
613	
614	
615	
616	
617	
618	
619	
620	
621	
622	
623	
624	
625	
626	
627	
628	
629	
630	
631	
632	
633	
634	
635	
636	
637	
638	
639	
640	
641	
642	
643	
644	
645	
646	
647	
648	
649	
650	
651	
652	
653	
654	
655	
656	
657	

P.O.B.
PHASE 2



PLOT PLAN

N89°28'57\"/>

SCALE: 1\"/>

PHASE 2

WING G

THAT PORTION OF THE LANDS DESCRIBED IN OFFICIAL RECORDS BOOK 4619, PAGES 1709 THROUGH 1719 PUBLIC RECORDS OF LAKE COUNTY, FLORIDA AND LYING IN SECTION 6, TOWNSHIP 20 SOUTH, RANGE 26 EAST, LAKE COUNTY, FLORIDA, DESCRIBED AS FOLLOWS:

COMMENCE AT THE NORTHWEST CORNER OF SAID SECTION 6 AS SHOWN ON THE FLORIDA DEPARTMENT OF ENVIRONMENTAL PROTECTION CERTIFIED CORNER RECORD NUMBER 073101, ON FILE WITH THE FLORIDA DEPARTMENT OF ENVIRONMENTAL PROTECTION, TALLAHASSEE, FLORIDA; THENCE RUN ON A BEARING RELATED TO FLORIDA STATE PLANE COORDINATES SYSTEM, EAST ZONE, S 00°59'22\"/>

SUBJECT TO EASEMENTS, RIGHT OF WAYS AND MATTERS OF RECORD.

PHASE 2 - WING G AREA CALCULATION

TYP. 2 BDR UNIT A/C AREA	=	1,124	SQ. FT.
TYP. 2 BDR UNIT GARAGE	=	254	SQ. FT.
TYP. 2 BDR UNIT TOTAL AREA	=	1,378	SQ. FT.

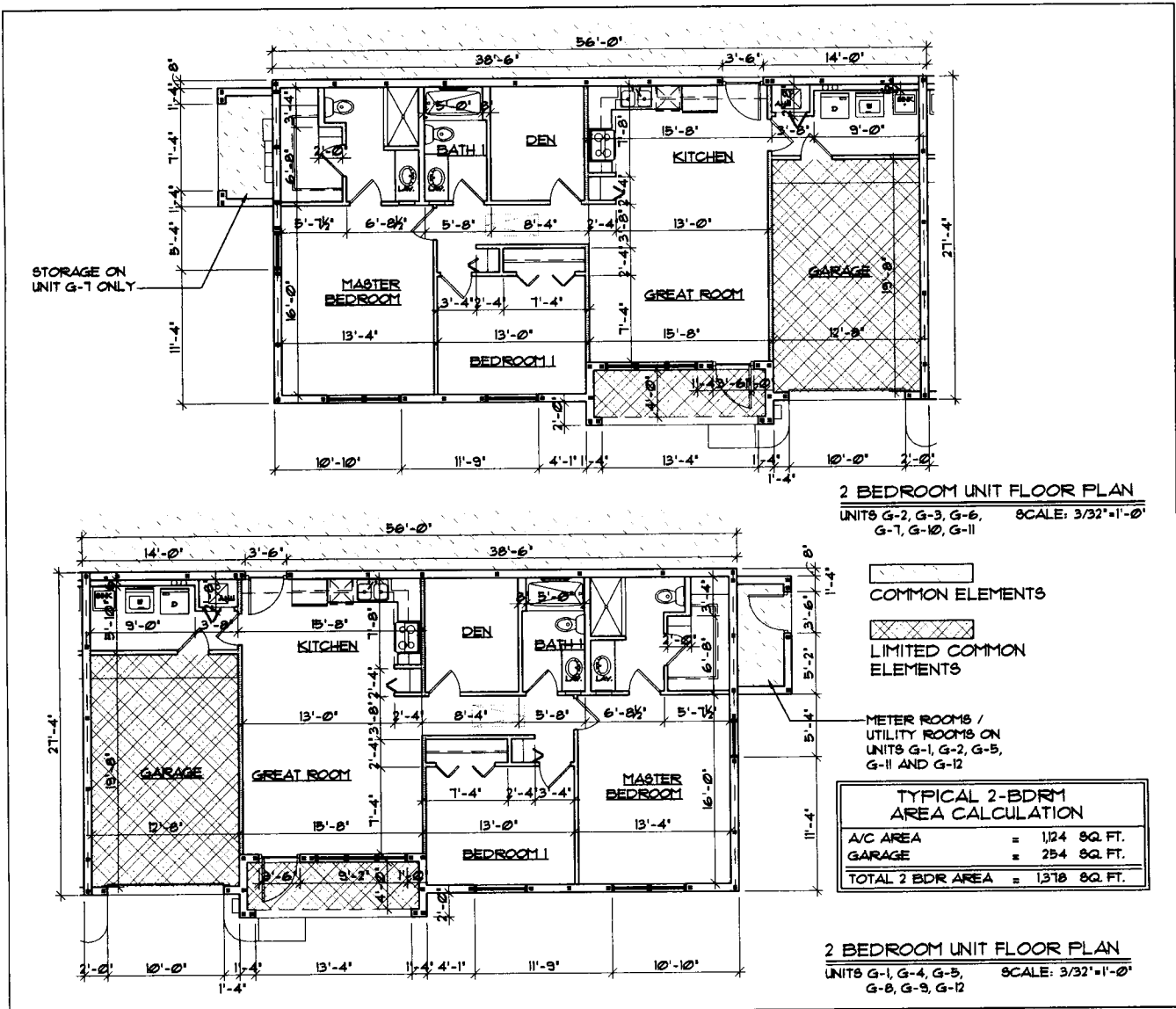
REVISION	NO.	DATE
1	1	11/20/15

PROJ. NO.	15CT150101
DATE	11/20/15

SHANTINIKETAN 3, A CONDOMINIUM
SECTION 6, TOWNSHIP 20 SOUTH, RANGE 26 EAST, LAKE COUNTY, FLORIDA
SHANTINIKETAN DEVELOPMENT, LLC
11717 US HWY 90, SUITE 100, TAMPA, FL 33613
TEL: 813.977.8888 FAX: 813.977.8888

06120092V1
RABBIT & ROMANO
ARCHITECTURE
PLANNING
DESIGN
11717 US HWY 90, SUITE 100, TAMPA, FL 33613
TEL: 813.977.8888 FAX: 813.977.8888

SHEET
A-2
OF



REVISIONS
1
2
3
4
5
6
7
8

PROJ. NO.	31E1501.01
DATE	11-20-15

SHANTINIKETAN 3, A CONDOMINIUM
 PROJECT OF SHANTINIKETAN 3, A CONDOMINIUM
 CITY OF TAMPA, FLORIDA
 SHANTINIKETAN DEVELOPMENT, LLC
 10015 SHANTINIKETAN, TAMPA, FLORIDA 33617

06F2009ZVW
 RABBIT & ROMANO
 PLANNING
 ARCHITECTURE
 DESIGN
 1111 GULF BLVD. SUITE 110
 TAMPA, FL 33602
 TEL: 813-281-1111
 FAX: 813-281-1112

SHEET
F-2
 OF

Exhibit "2-A"**Boundary Survey – Plot Plan for Subsequent Phases (Phases 3-10)**

NOTE: ALL
IMPROVEMENTS
ARE PROPOSED.

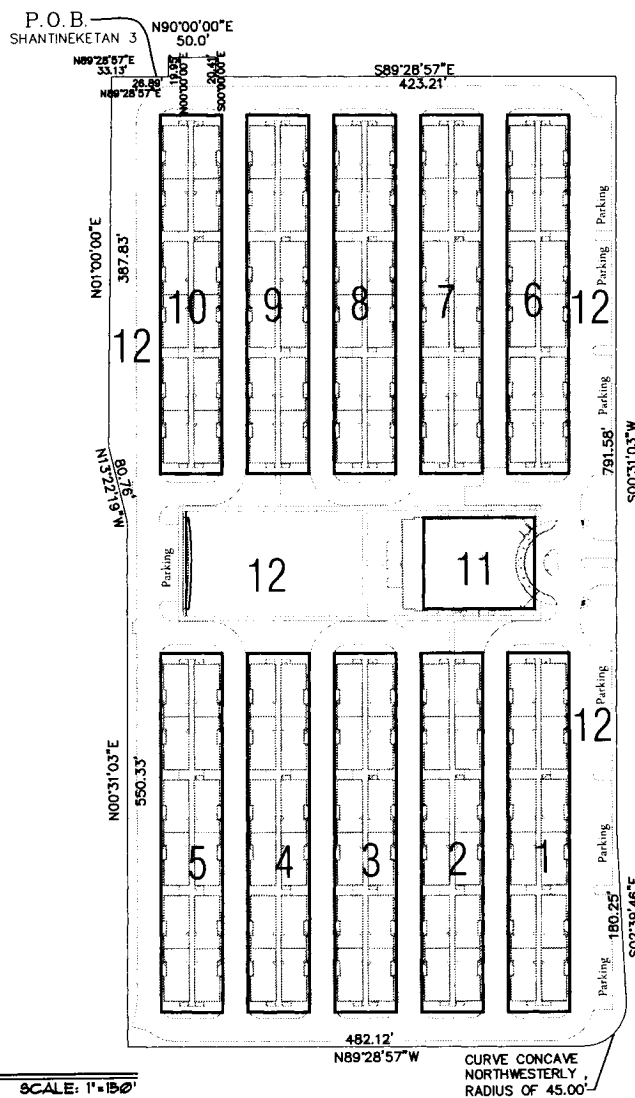
NOTE: PARCELS 3-10 ARE
SUBSEQUENT PHASES AND ARE
SHOWN FOR INFORMATIONAL
PURPOSES ONLY.

NOTE: PARCELS 11 AND 12
CONSISTS OF COMMON
ELEMENTS ONLY



PLOT PLAN

SCALE: 1"=150'



REVISIONS
1
2
3
4
5
6
7
8

PROJ. NO. 31CF1501-01	DATE 11-20-15
--------------------------	------------------

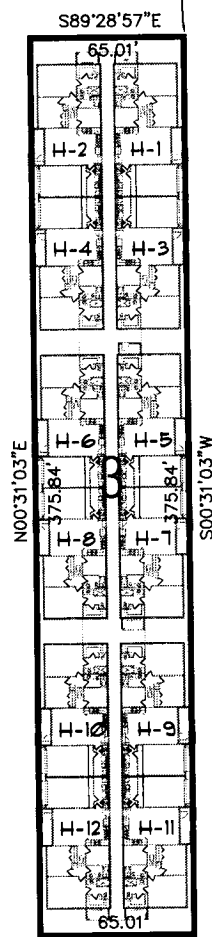
SHANTINIKETAN 3, A CONDOMINIUM
SECTION OF TOWNSHIP OF SOUTH SANDS XX EAST
CITY OF TAMPA, HILLSBOROUGH COUNTY, FL 33610
SHANTI NIKETAN DEVELOPERS, LLC
804 S. DUNCAN DR. TAMPA, FLORIDA 33610
TEL: (813) 274-6667, WEBSITE: SHANTINIKETAN3.COM

RABITS & ROMANO
ARCHITECTURE
PLANNING
DESIGN

1000 17th Street, NW
Washington, DC 20036
Tel: 202-462-1300
Fax: 202-462-1301
www.rabitsromano.com

SHEET
A-12
OF

P.O.B.
PHASE 3



PHASE 3

WING H

THAT PORTION OF THE LANDS DESCRIBED IN OFFICIAL RECORDS BOOK 4619, PAGES 1709 THROUGH 1719 PUBLIC RECORDS OF LAKE COUNTY, FLORIDA AND LYING IN SECTION 6, TOWNSHIP 20 SOUTH, RANGE 26 EAST, LAKE COUNTY, FLORIDA, DESCRIBED AS FOLLOWS:

COMMENCE AT THE NORTHWEST CORNER OF SAID SECTION 6 AS SHOWN ON THE FLORIDA DEPARTMENT OF ENVIRONMENTAL PROTECTION CERTIFIED CORNER RECORD NUMBER 073101, ON FILE WITH THE FLORIDA DEPARTMENT OF ENVIRONMENTAL PROTECTION, TALLAHASSEE, FLORIDA; THENCE RUN ON A BEARING RELATED TO FLORIDA STATE PLANE COORDINATES SYSTEM, EAST ZONE, S 00°59'22"W ALONG THE WEST LINE OF THE NORTHWEST 1/4 OF SAID SECTION 6, A DISTANCE OF 1591.90 FEET TO THE BEGINNING POINT OF SHANTI NIKETAN SENIOR CONDOS PHASE 3; THENCE RUN N 89°28'57"W ALONG THE NORTH LINE OF SAID PHASE 3 A DISTANCE OF 33.13 FEET TO THE NORTHWEST CORNER OF SAID PHASE 3; THENCE RUN S 01°00'00"W ALONG THE WEST LINE OF SAID PHASE 3 AND THE WEST LINE OF AFORESAID LANDS DESCRIBED IN OFFICIAL RECORDS BOOK 4619, PAGES 1709 THROUGH 1719, A DISTANCE OF 387.83 FEET; THENCE DEPARTING SAID WEST LINE OF THE LANDS DESCRIBED IN OFFICIAL RECORDS BOOK 4619, PAGES 1709 THROUGH 1719, AND CONTINUING ALONG THE WEST LINE OF SAID PHASE 3 THE FOLLOWING TWO COURSES, S 13°22'19"E A DISTANCE OF 80.76 FEET; THENCE RUN S 00°31'03"W A DISTANCE OF 138.26 FEET; THENCE DEPARTING SAID WEST LINE RUN S 89°28'57"E A DISTANCE OF 218.67 FEET TO THE POINT OF BEGINNING; THENCE CONTINUE S 89°28'57"E A DISTANCE OF 65.01 FEET; THENCE RUN S 00°31'03"W A DISTANCE OF 375.84 FEET; THENCE RUN N 89°28'57"W A DISTANCE OF 65.01 FEET; THENCE RUN N 00°31'03"E A DISTANCE OF 375.84 FEET TO THE POINT OF BEGINNING. CONTAINING 24433.36 SQUARE FEET OR 0.56 ACRES MORE OR LESS. SUBJECT TO EASEMENTS, RIGHT OF WAYS AND MATTERS OF RECORD.

PHASE 3 - WING H AREA CALCULATION

TYP. 2 BDR UNIT A/C AREA	=	1124	SQ. FT.
TYP. 2 BDR UNIT GARAGE	=	254	SQ. FT.
TYP. 2 BDR UNIT TOTAL AREA	=	1378	SQ. FT.



PLOT PLAN

S89°28'57"E

SCALE: 1"=60'

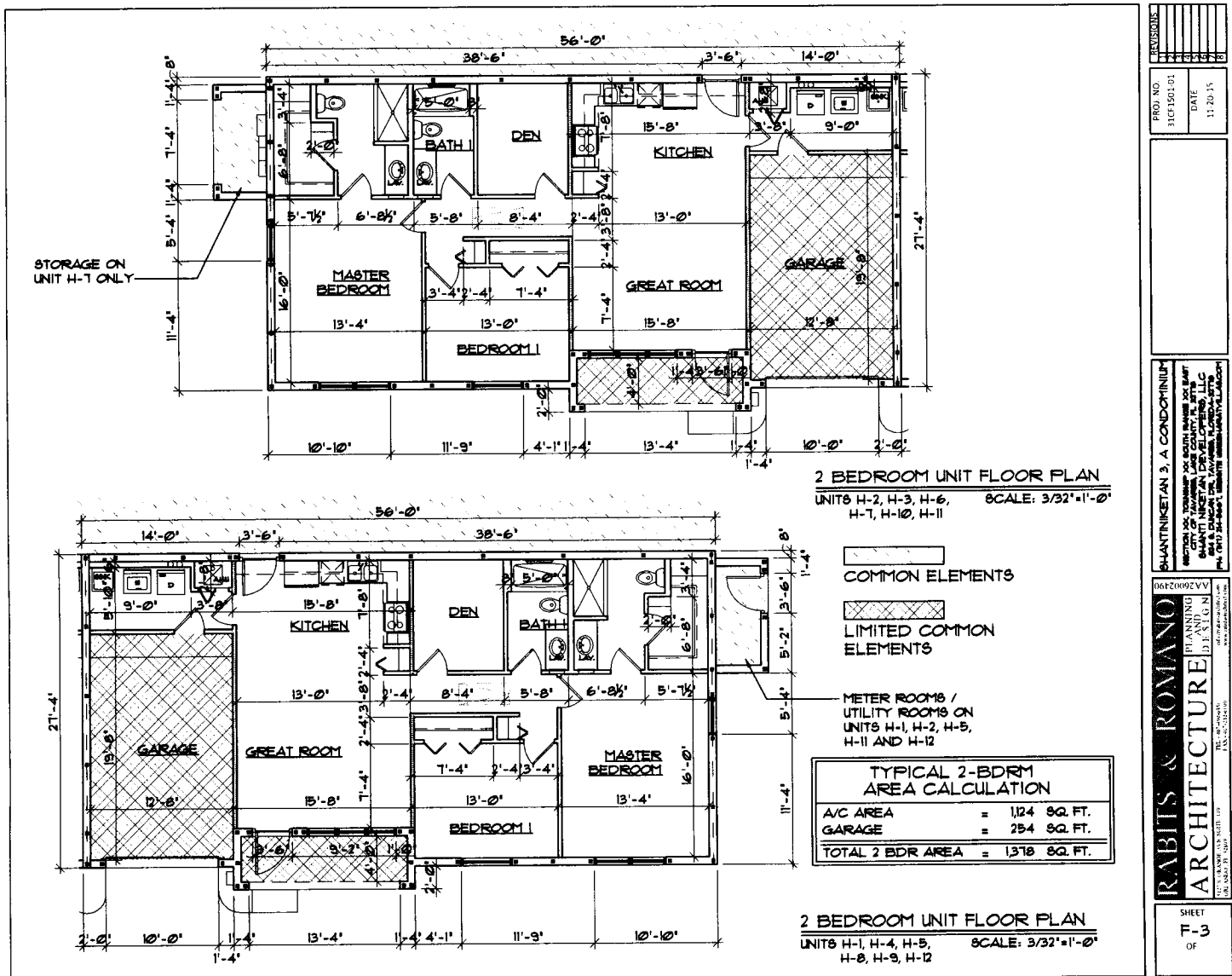
REVISIONS
1
2
3
4
5
6
7
8
9
10

PROJ. NO.	31CT1501-01
DATE	11/20/15

SHANTI NIKETAN 3, A CONDOMINIUM
DESIGNED BY: RABITS & ROMANO ARCHITECTURE, LLC
CITY OF TALLAHASSEE, FLORIDA
SHANTI NIKETAN DEVELOPMENT, LLC
PH. 907-84-8800, EMAIL: INFO@RABITS-ARCHITECTURE.COM

06/20/2015
RABITS & ROMANO ARCHITECTURE
PLANNING DESIGN
101 N. 9TH STREET, SUITE 100
TALLAHASSEE, FLORIDA 32309
TEL: 907-84-8800, FAX: 907-84-8801
WWW.RABITS-ARCHITECTURE.COM

SHEET
A-3
OF



PROJ. NO.	DATE
31CF1501-01	11-20-15

PROJ. NO.	DATE
31CF1501-01	11-20-15

PROJ. NO.	DATE
31CF1501-01	11-20-15

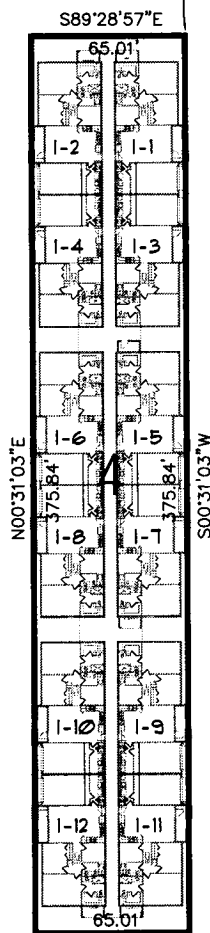
PROJ. NO.	DATE
31CF1501-01	11-20-15

PROJ. NO.	DATE
31CF1501-01	11-20-15

PROJ. NO.	DATE
31CF1501-01	11-20-15

PROJ. NO.	DATE
31CF1501-01	11-20-15

P.O.B.
PHASE 4



PLOT PLAN

N89°28'57"W

SCALE: 1"=60'

PHASE 4 WING I

THAT PORTION OF THE LANDS DESCRIBED IN OFFICIAL RECORDS BOOK 4619, PAGES 1709 THROUGH 1719 PUBLIC RECORDS OF LAKE COUNTY, FLORIDA AND LYING IN SECTION 6, TOWNSHIP 20 SOUTH, RANGE 26 EAST, LAKE COUNTY, FLORIDA, DESCRIBED AS FOLLOWS:

COMMENCE AT THE NORTHWEST CORNER OF SAID SECTION 6 AS SHOWN ON THE FLORIDA DEPARTMENT OF ENVIRONMENTAL PROTECTION CERTIFIED CORNER RECORD NUMBER 073101, ON FILE WITH THE FLORIDA DEPARTMENT OF ENVIRONMENTAL PROTECTION, TALLAHASSEE, FLORIDA; THENCE RUN ON A BEARING RELATED TO FLORIDA STATE PLANE COORDINATES SYSTEM, EAST ZONE, S 00°59'22"W ALONG THE WEST LINE OF THE NORTHWEST 1/4 OF SAID SECTION 6, A DISTANCE OF 1591.90 FEET TO THE BEGINNING POINT OF SHANTI NIKETAN SENIOR CONDOS PHASE 3; THENCE RUN N 89°28'57"W ALONG THE NORTH LINE OF SAID PHASE 3 A DISTANCE OF 33.13 FEET TO THE NORTHWEST CORNER OF SAID PHASE 3; THENCE RUN S 01°00'00"W ALONG THE WEST LINE OF SAID PHASE 3 AND THE WEST LINE OF AFORESAID LANDS DESCRIBED IN OFFICIAL RECORDS BOOK 4619, PAGES 1709 THROUGH 1719, A DISTANCE OF 387.83 FEET; THENCE DEPARTING SAID WEST LINE OF THE LANDS DESCRIBED IN OFFICIAL RECORDS BOOK 4619, PAGES 1709 THROUGH 1719, AND CONTINUING ALONG THE WEST LINE OF SAID PHASE 3 THE FOLLOWING TWO COURSES: S 13°22'19"E A DISTANCE OF 80.76 FEET; THENCE RUN S 00°31'03"W A DISTANCE OF 138.26 FEET; THENCE DEPARTING SAID WEST LINE RUN S 89°28'57"E A DISTANCE OF 127.00 FEET TO THE POINT OF BEGINNING; THENCE CONTINUE S 89°28'57"E A DISTANCE OF 65.01 FEET; THENCE RUN S 00°31'03"W A DISTANCE OF 375.84 FEET; THENCE RUN N 89°28'57"W A DISTANCE OF 65.01 FEET; THENCE RUN N 00°31'03"E A DISTANCE OF 375.84 FEET TO THE POINT OF BEGINNING. CONTAINING 24433.36 SQUARE FEET OR 0.56 ACRES MORE OR LESS. SUBJECT TO EASEMENTS, RIGHT OF WAYS AND MATTERS OF RECORD.

PHASE 4- WING I AREA CALCULATION

TYP. 2 BDR UNIT A/C AREA	=	1,124	SQ. FT.
TYP. 2 BDR UNIT GARAGE	=	254	SQ. FT.
TYP. 2 BDR UNIT TOTAL AREA	=	1,378	SQ. FT.

REVISIONS
1
2
3
4
5
6
7
8
9
10

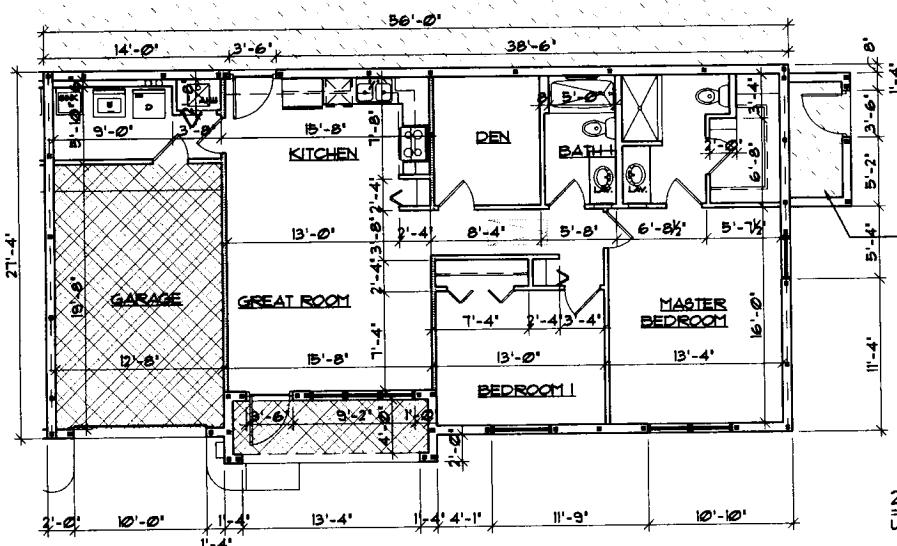
PROJ. NO.	DATE
31CF1501-01	11.20.15

SHANTI NIKETAN 3, A CONDOMINIUM
SECTION 6, TOWNSHIP 20 SOUTH, RANGE 26 EAST, LAKE COUNTY, FLORIDA
SHANTI NIKETAN DEVELOPMENT, LLC
11111 11111 11111 11111 11111 11111 11111 11111 11111 11111

RABITS & ROVANO ARCHITECTURE
PLANNING
DESIGN
CONSTRUCTION
11111 11111 11111 11111 11111 11111 11111 11111 11111 11111

PHASE 4- WING I
AREA CALCULATION
11111 11111 11111 11111 11111 11111 11111 11111 11111 11111

SHEET
A-4
OF



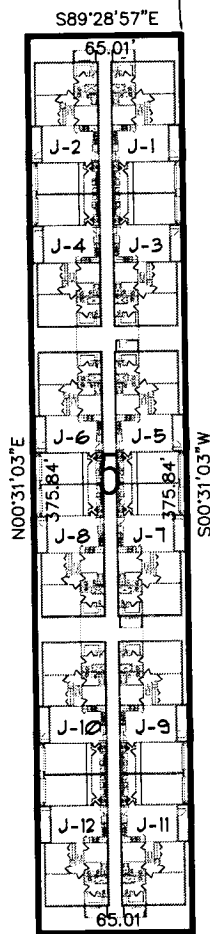
2 BEDROOM UNIT FLOOR PLAN
UNITS 1-1, 1-4, 1-5, 1-8, 1-9, 1-12 SCALE: 3/32"=1'-0"

TYPICAL 2-BDRM AREA CALCULATION		
A/C AREA	=	1124 SQ. FT.
GARAGE	=	254 SQ. FT.
TOTAL 2 BDR AREA	=	1378 SQ. FT.

- METER ROOMS /
UTILITY ROOMS
ON UNITS 1-1, 1-2,
1-3, 1-11 AND 1-12

SHEET
F-4
OF

P.O.B.
PHASE 5



PLOT PLAN

N89°28'57\"W

SCALE: 1\"=60'

PHASE 5 WING J

THAT PORTION OF THE LANDS DESCRIBED IN OFFICIAL RECORDS BOOK 4619, PAGES 1709 THROUGH 1719 PUBLIC RECORDS OF LAKE COUNTY, FLORIDA AND LYING IN SECTION 6, TOWNSHIP 20 SOUTH, RANGE 26 EAST, LAKE COUNTY, FLORIDA, DESCRIBED AS FOLLOWS:

COMMENCE AT THE NORTHWEST CORNER OF SAID SECTION 6 AS SHOWN ON THE FLORIDA DEPARTMENT OF ENVIRONMENTAL PROTECTION CERTIFIED CORNER RECORD NUMBER 073101, ON FILE WITH THE FLORIDA DEPARTMENT OF ENVIRONMENTAL PROTECTION, TALLAHASSEE, FLORIDA; THENCE RUN ON A BEARING RELATED TO FLORIDA STATE PLANE COORDINATES SYSTEM, EAST ZONE, S 00°59'22\"W ALONG THE WEST LINE OF THE NORTHWEST 1/4 OF SAID SECTION 6, A DISTANCE OF 1591.90 FEET TO THE BEGINNING POINT OF SHANTI NIKETAN SENIOR CONDOS PHASE 3; THENCE RUN N 89°28'57\"W ALONG THE NORTH LINE OF SAID PHASE 3 A DISTANCE OF 33.13 FEET TO THE NORTHWEST CORNER OF SAID PHASE 3; THENCE RUN S 01°00'00\"W ALONG THE WEST LINE OF SAID PHASE 3 AND THE WEST LINE OF AFORESAID LANDS DESCRIBED IN OFFICIAL RECORDS BOOK 4619, PAGES 1709 THROUGH 1719, A DISTANCE OF 387.83 FEET; THENCE DEPARTING SAID WEST LINE OF THE LANDS DESCRIBED IN OFFICIAL RECORDS BOOK 4619, PAGES 1709 THROUGH 1719, AND CONTINUING ALONG THE WEST LINE OF SAID PHASE 3 THE FOLLOWING TWO COURSES, S 13°22'19\"E A DISTANCE OF 80.76 FEET; THENCE RUN S 00°31'03\"W A DISTANCE OF 138.26 FEET; THENCE DEPARTING SAID WEST LINE RUN S 89°28'57\"E A DISTANCE OF 35.33 FEET TO THE POINT OF BEGINNING; THENCE CONTINUE S 89°28'57\"E A DISTANCE OF 65.01 FEET; THENCE RUN S 00°31'03\"W A DISTANCE OF 375.84 FEET; THENCE RUN N 89°28'57\"W A DISTANCE OF 65.01 FEET; THENCE RUN N 00°31'03\"E A DISTANCE OF 375.84 FEET TO THE POINT OF BEGINNING.

CONTAINING 24433.36 SQUARE FEET OR 0.56 ACRES MORE OR LESS.
SUBJECT TO EASEMENTS, RIGHT OF WAYS AND MATTERS OF RECORD.

PHASE 5 - WING J AREA CALCULATION

TYP. 2 BDR UNIT A/C AREA	=	1,124	SQ. FT.
TYP. 2 BDR UNIT GARAGE	=	254	SQ. FT.
TYP. 2 BDR UNIT TOTAL AREA	=	1,378	SQ. FT.

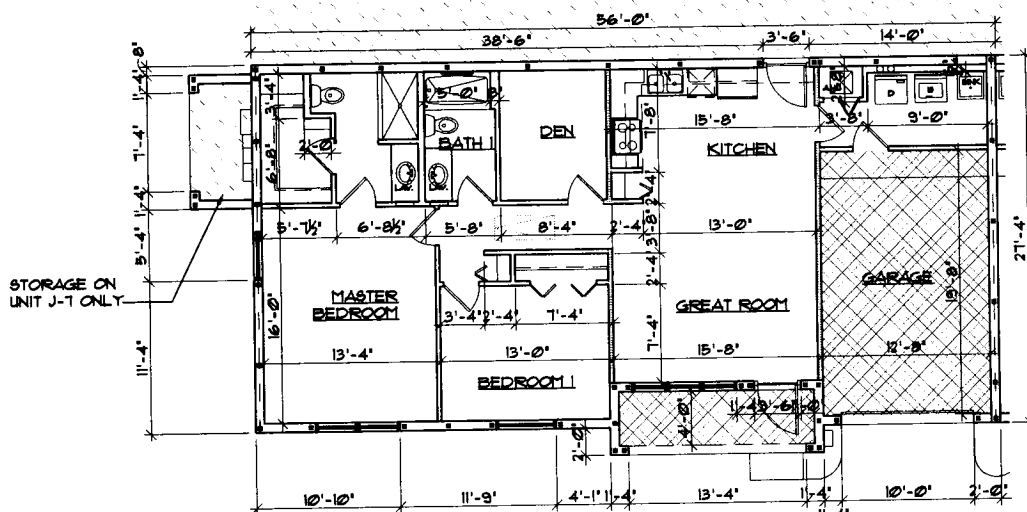
REVISIONS
1
2
3
4
5
6
7
8
9
10

PROJ. NO.	DATE
11011501-01	11/20/15

SHANTI NIKETAN 3, A CONDOMINIUM
SUBDIVISION IN LAKE COUNTY, FLORIDA
CITY OF LAKE COUNTY, FLORIDA
SHANTI NIKETAN DEVELOPMENT, LLC
11011501-01 SHANTI NIKETAN 3, A CONDOMINIUM

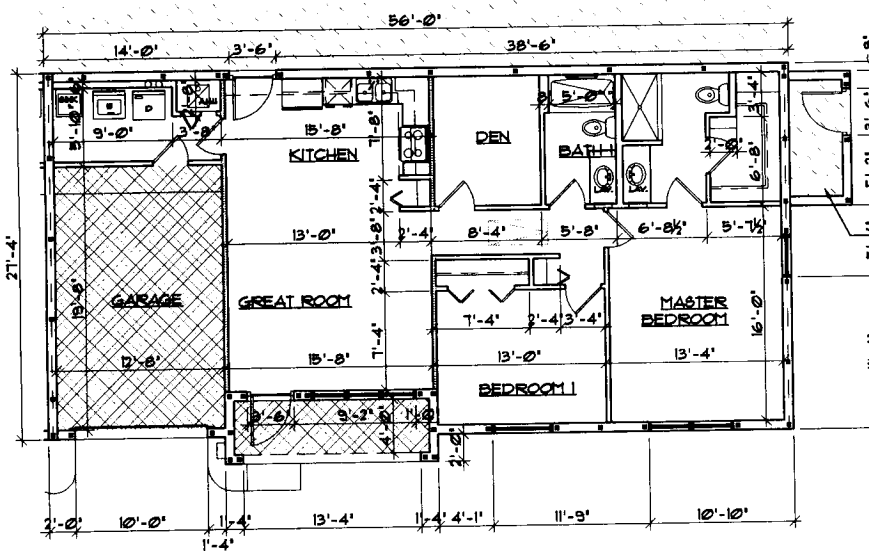
06120002VV
PLANNING
ARCHITECTURE
DESIGN
RABITS & ROMANO
11011501-01 SHANTI NIKETAN 3, A CONDOMINIUM

SHEET
A-5
OF



2 BEDROOM UNIT FLOOR PLAN

UNITS J-2, J-3, J-6, J-7, J-10, J-11 SCALE: 3/32"=1'-0"



COMMON ELEMENTS

LIMITED COMMON ELEMENTS

METER ROOMS /
UTILITY ROOMS
ON UNITS J-1, J-2,
J-5, J-11 AND J-12TYPICAL 2-BDRM
AREA CALCULATION

A/C AREA	=	1,124 SQ. FT.
GARAGE	=	254 SQ. FT.
TOTAL 2 BDR AREA	=	1,378 SQ. FT.

2 BEDROOM UNIT FLOOR PLAN

UNITS J-1, J-4, J-5, J-8, J-9, J-12 SCALE: 3/32"=1'-0"

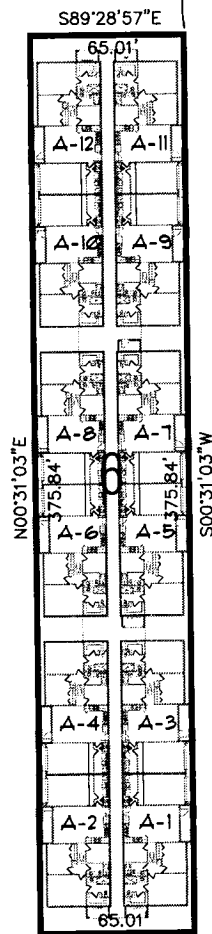
PROJ. NO.	31071501.01
DATE	11.20.15

SHANTINIKETAN 3, A CONDOMINIUM
PROJECT
DESIGNED BY
RABITS & ROMANO ARCHITECTURE
PLANNING
DESIGN
1175 GRAND AVENUE, SUITE 117
ANN ARBOR, MI 48106
TEL: 734.769.0000
WWW.RABITS-AND-ROMANO.COM

RABITS & ROMANO
ARCHITECTURE
PLANNING
DESIGN

SHEET
F-5
OF

P.O.B.
PHASE 6



PLOT PLAN

N89°28'57\"/>

SCALE: 1\"/>

PHASE 6

WING A

THAT PORTION OF THE LANDS DESCRIBED IN OFFICIAL RECORDS BOOK 4619, PAGES 1709 THROUGH 1719 PUBLIC RECORDS OF LAKE COUNTY, FLORIDA AND LYING IN SECTION 6, TOWNSHIP 20 SOUTH, RANGE 26 EAST, LAKE COUNTY, FLORIDA, DESCRIBED AS FOLLOWS:

COMMENCE AT THE NORTHWEST CORNER OF SAID SECTION 6 AS SHOWN ON THE FLORIDA DEPARTMENT OF ENVIRONMENTAL PROTECTION CERTIFIED CORNER RECORD NUMBER 073101, ON FILE WITH THE FLORIDA DEPARTMENT OF ENVIRONMENTAL PROTECTION, TALLAHASSEE, FLORIDA; THENCE RUN ON A BEARING RELATED TO FLORIDA STATE PLANE COORDINATES SYSTEM, EAST ZONE, S 00°59'22\"/>

CONTAINING 24433.36 SQUARE FEET OR 0.56 ACRES MORE OR LESS.
SUBJECT TO EASEMENTS, RIGHT OF WAYS AND MATTERS OF RECORD.

PHASE 6 - WING A AREA CALCULATION

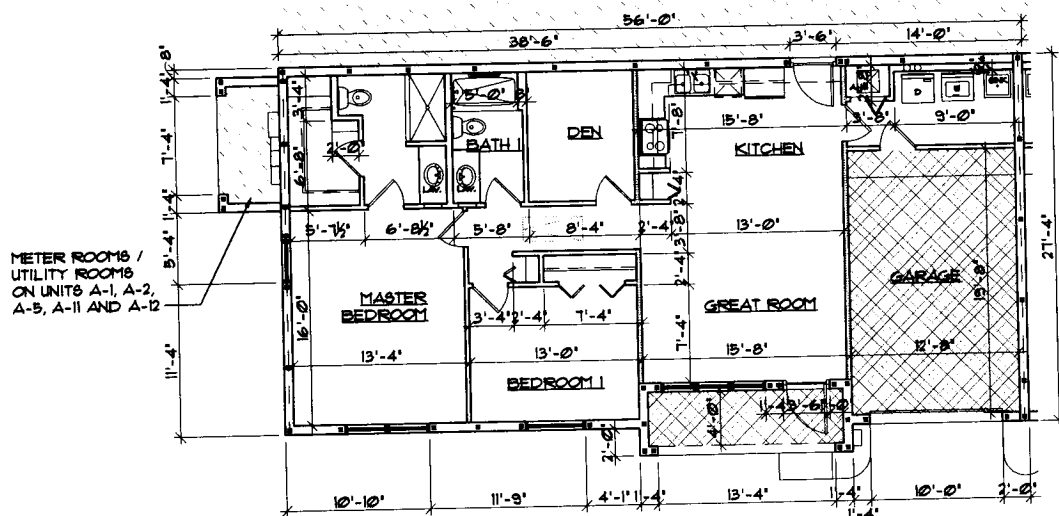
TYP. 2 BDR UNIT A/C AREA	=	1124 SQ. FT.
TYP. 2 BDR UNIT GARAGE	=	254 SQ. FT.
TYP. 2 BDR UNIT TOTAL AREA	=	1378 SQ. FT.

PROJ. NO.	DATE
1001501.01	11-20-15

SHANTINIKETAN 3, A CONDOMINIUM
SECTION 66, TOWNSHIP 20 SOUTH, RANGE 26 EAST, LAKE COUNTY, FLORIDA
SHANTI NIKETAN DEVELOPMENT, LLC
8611 PHASE 6, UNIT 100, TALLAHASSEE, FLORIDA 32309-1000

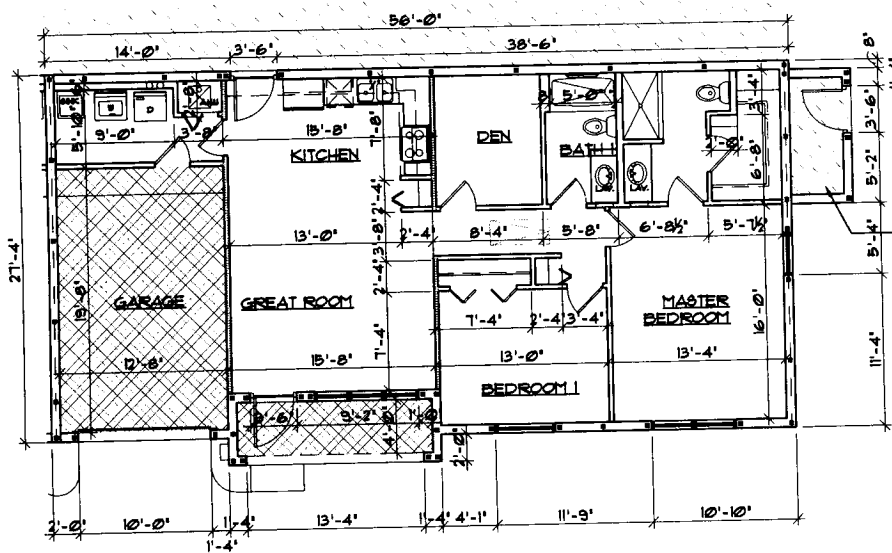
RABITS & ROMANO
ARCHITECTURE
PLANNING
DESIGN
1001501.01
11-20-15

SHEET
A-6
OF



2 BEDROOM UNIT FLOOR PLAN

UNITS A-1, A-4, A-5, A-8, A-9, A-12 SCALE: 3/32"=1'-0"



2 BEDROOM UNIT FLOOR PLAN

UNITS A-2, A-3, A-6, A-7, A-10, A-11 SCALE: 3/32"=1'-0"

COMMON ELEMENTS

LIMITED COMMON ELEMENTS

STORAGE ON UNIT A-7 ONLY

TYPICAL 2-BDRM AREA CALCULATION

A/C AREA	=	1,124	SQ. FT.
GARAGE	=	254	SQ. FT.
TOTAL 2 BDR AREA	=	1,378	SQ. FT.

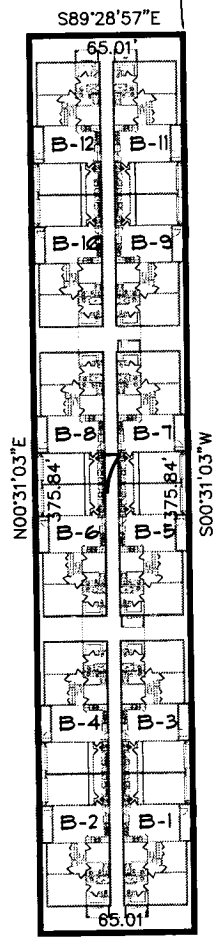
PROJ. NO.	3101501-01
DATE	11-20-15

SHANTINIKETAN 3, A CONDOMINIUM
 PROJECT NO. 3101501-01
 SHEET NO. 1 OF 1
 SHANTINIKETAN DEVELOPERS, LLC
 841 S. DAVENPORT AVE. SUITE 100
 TAMPA, FL 33606

RABITS & ROMANO
 ARCHITECTURE
 PLANNING
 DESIGN
 1111 N. W. 11th Ave.
 Suite 100
 Ft. Lauderdale, FL 33304
 (954) 561-1111

SHEET
F-6
 OF

P.O.B.
PHASE 7



PLOT PLAN

N89°28'57"W

SCALE: 1"=60'

PHASE 7

WING B

THAT PORTION OF THE LANDS DESCRIBED IN OFFICIAL RECORDS BOOK 4619, PAGES 1709 THROUGH 1719 PUBLIC RECORDS OF LAKE COUNTY, FLORIDA AND LYING IN SECTION 6, TOWNSHIP 20 SOUTH, RANGE 26 EAST, LAKE COUNTY, FLORIDA, DESCRIBED AS FOLLOWS:

COMMENCE AT THE NORTHWEST CORNER OF SAID SECTION 6 AS SHOWN ON THE FLORIDA DEPARTMENT OF ENVIRONMENTAL PROTECTION CERTIFIED CORNER RECORD NUMBER 073101, ON FILE WITH THE FLORIDA DEPARTMENT OF ENVIRONMENTAL PROTECTION, TALLAHASSEE, FLORIDA; THENCE RUN ON A BEARING RELATED TO FLORIDA STATE PLANE COORDINATES SYSTEM, EAST ZONE, S 00°59'22"W ALONG THE WEST LINE OF THE NORTHWEST 1/4 OF SAID SECTION 6, A DISTANCE OF 1591.90 FEET TO THE BEGINNING POINT OF SHANTI NIKETAN SENIOR CONDOS PHASE 3; THENCE RUN N 89°28'57"W ALONG THE NORTH LINE OF SAID PHASE 3 A DISTANCE OF 33.13 FEET TO THE NORTHWEST CORNER OF SAID PHASE 3; THENCE RUN S 01°00'00"W ALONG THE WEST LINE OF SAID PHASE 3 AND THE WEST LINE OF AFORESAID LANDS DESCRIBED IN OFFICIAL RECORDS BOOK 4619, PAGES 1709 THROUGH 1719, A DISTANCE OF 40.23 FEET; THENCE DEPARTING SAID WEST LINE RUN S 89°28'57"E A DISTANCE OF 326.80 FEET TO THE POINT OF BEGINNING; THENCE CONTINUE S 89°28'57"E A DISTANCE OF 65.01 FEET; THENCE RUN S 00°31'03"W A DISTANCE OF 375.84 FEET; THENCE RUN N 89°28'57"W A DISTANCE OF 65.01 FEET; THENCE RUN N 00°31'03"E A DISTANCE OF 375.84 FEET TO THE POINT OF BEGINNING.

CONTAINING 24433.36 SQUARE FEET OR 0.56 ACRES MORE OR LESS.
SUBJECT TO EASEMENTS, RIGHT OF WAYS AND MATTERS OF RECORD.

PHASE 7 - WING B AREA CALCULATION

TYP. 2 BDR UNIT A/C AREA	=	1,124 SQ. FT.
TYP. 2 BDR UNIT GARAGE	=	254 SQ. FT.
TYP. 2 BDR UNIT TOTAL AREA	=	1,378 SQ. FT.

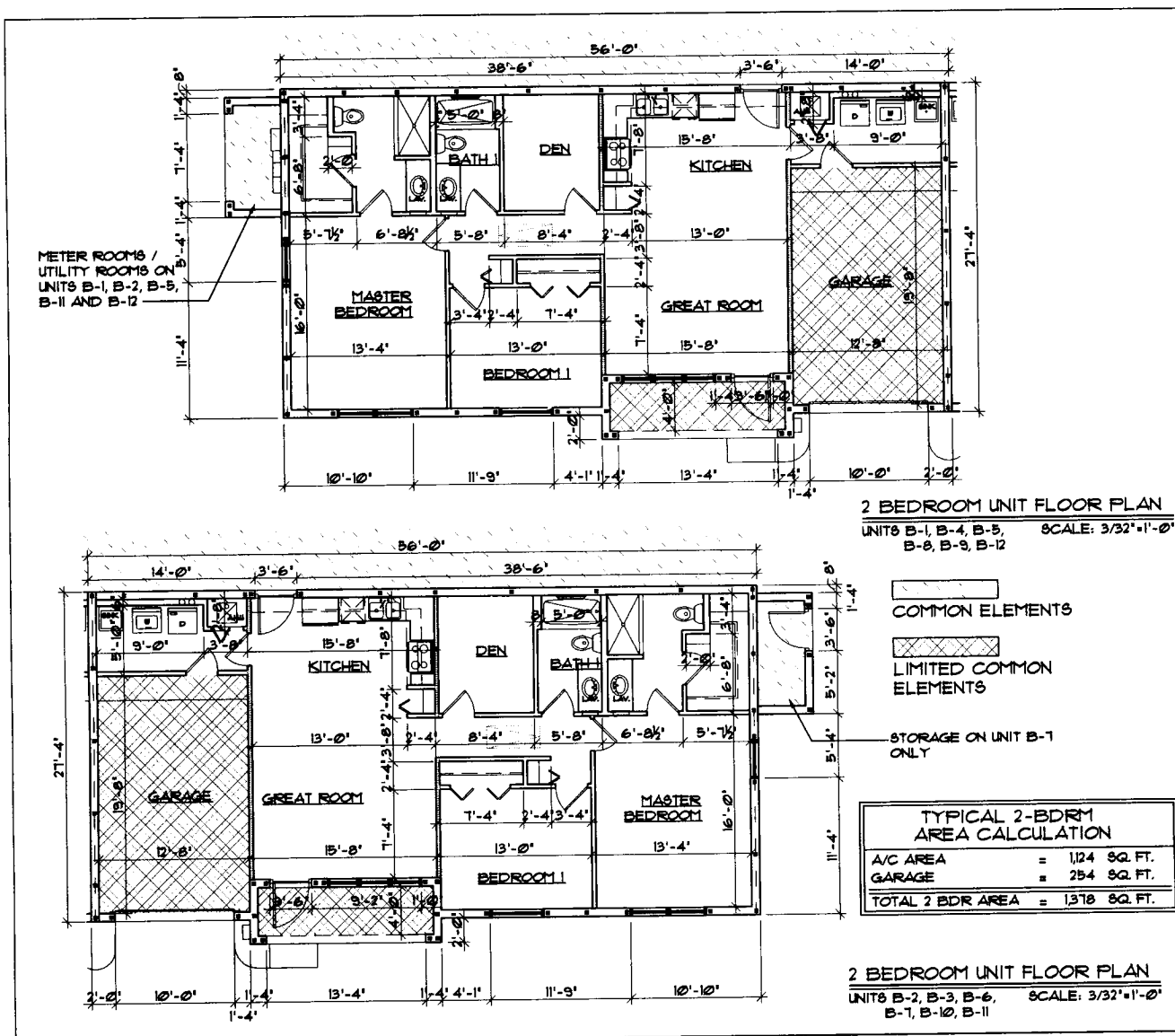
REVISIONS
1
2
3
4
5
6
7
8
9
10

PROJ. NO.	31CT1501.01
DATE	11-20-15

SHANTI NIKETAN 3, A CONDOMINIUM
SECTION 06, TOWNSHIP 20 SOUTH, RANGE 26 EAST
LAKE COUNTY, FLORIDA
OWNER: SHANTI NIKETAN 3, LLC
DESIGNER: RABBIT & ROMANO ARCHITECTURE, PLLC
DATE: 11-20-15

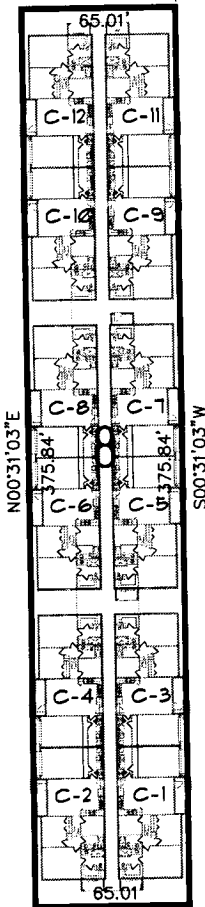
RABBIT & ROMANO
ARCHITECTURE
PLANNING
AND
DESIGN
1111 N. W. 11th Ave., Suite 100
Fort Lauderdale, FL 33304
Tel: 954.561.1111
Fax: 954.561.1112

SHEET
A-7
OF



P.O.B.
PHASE 8

S89°28'57"E



PLOT PLAN

SCALE: 1"=60'

PHASE 8

WING C

THAT PORTION OF THE LANDS DESCRIBED IN OFFICIAL RECORDS BOOK 4619, PAGES 1709 THROUGH 1719 PUBLIC RECORDS OF LAKE COUNTY, FLORIDA AND LYING IN SECTION 6, TOWNSHIP 20 SOUTH, RANGE 26 EAST, LAKE COUNTY, FLORIDA, DESCRIBED AS FOLLOWS:

COMMENCE AT THE NORTHWEST CORNER OF SAID SECTION 6 AS SHOWN ON THE FLORIDA DEPARTMENT OF ENVIRONMENTAL PROTECTION CERTIFIED CORNER RECORD NUMBER 073101, ON FILE WITH THE FLORIDA DEPARTMENT OF ENVIRONMENTAL PROTECTION, TALLAHASSEE, FLORIDA; THENCE RUN ON A BEARING RELATED TO FLORIDA STATE PLANE COORDINATES SYSTEM, EAST ZONE, S 00°59'22"W ALONG THE WEST LINE OF THE NORTHWEST 1/4 OF SAID SECTION 6, A DISTANCE OF 1591.90 FEET TO THE BEGINNING POINT OF SHANTHI NIKETAN SENIOR CONDOS PHASE 3; THENCE RUN N 89°28'57"W ALONG THE NORTH LINE OF SAID PHASE 3 A DISTANCE OF 33.13 FEET TO THE NORTHWEST CORNER OF SAID PHASE 3; THENCE RUN S 01°00'00"W ALONG THE WEST LINE OF SAID PHASE 3 AND THE WEST LINE OF AFORESAID LANDS DESCRIBED IN OFFICIAL RECORDS BOOK 4619, PAGES 1709 THROUGH 1719, A DISTANCE OF 40.23 FEET; THENCE DEPARTING SAID WEST LINE RUN S 89°28'57"E A DISTANCE OF 235.13 FEET TO THE POINT OF BEGINNING; THENCE CONTINUE S 89°28'57"E A DISTANCE OF 65.01 FEET; THENCE RUN S 00°31'03"W A DISTANCE OF 375.84 FEET; THENCE RUN N 89°28'57"W A DISTANCE OF 65.01 FEET; THENCE RUN N 00°31'03"E A DISTANCE OF 375.84 FEET TO THE POINT OF BEGINNING.

CONTAINING 24433.36 SQUARE FEET OR 0.56 ACRES MORE OR LESS.
SUBJECT TO EASEMENTS, RIGHT OF WAYS AND MATTERS OF RECORD.

PHASE 8 - WING C
AREA CALCULATION

TYP. 2 BDR UNIT A/C AREA	=	1,124	SQ. FT.
TYP. 2 BDR UNIT GARAGE	=	254	SQ. FT.
TYP. 2 BDR UNIT TOTAL AREA	=	1,378	SQ. FT.

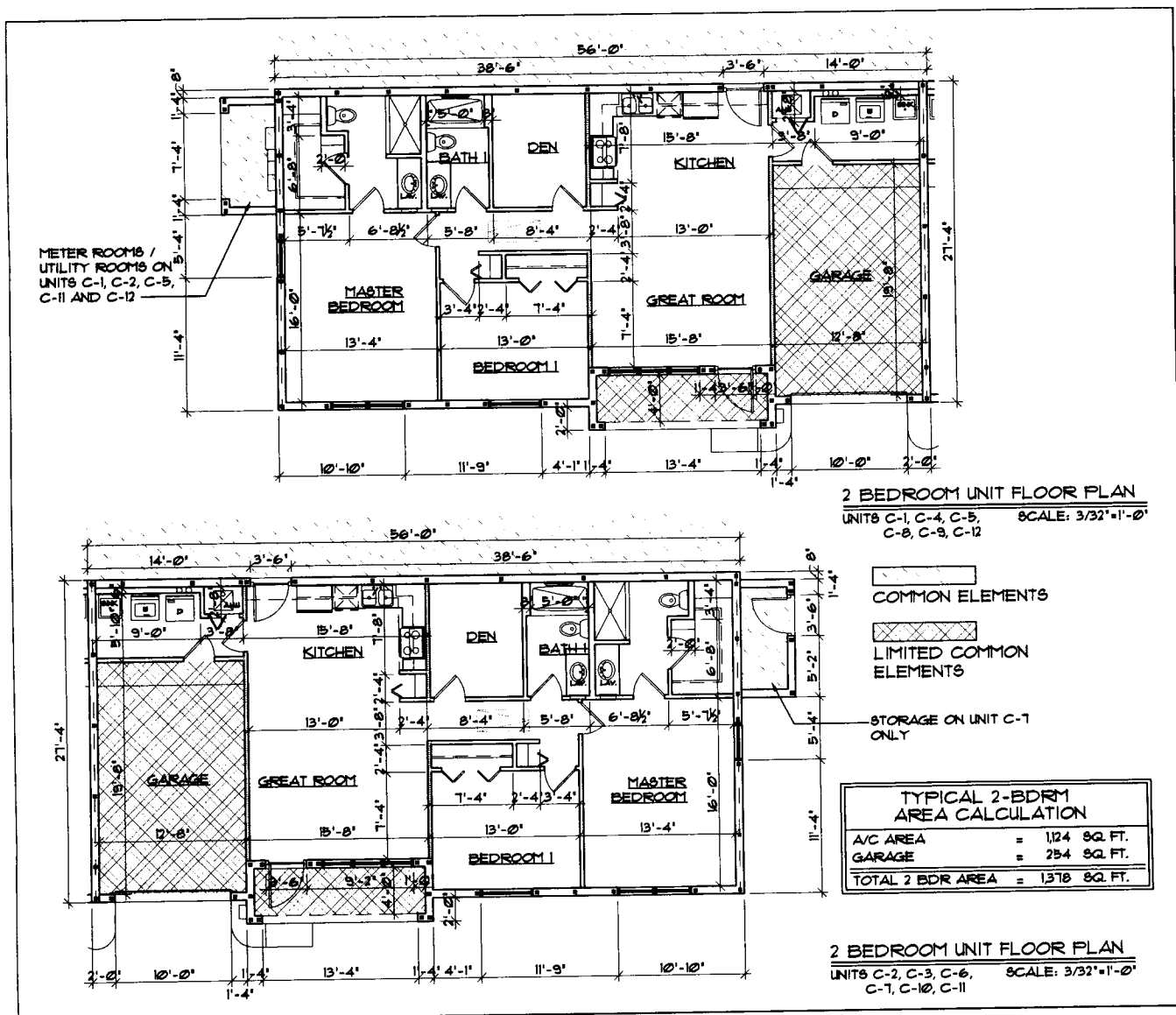
REVISIONS
1
2
3
4
5
6
7
8
9
10

PROJ. NO.	31C1501.01
DATE	11.20.15

SHANTHI NIKETAN 3, A CONDOMINIUM
SECTION 6, TOWNSHIP 20 SOUTH, RANGE 26 EAST, LAKE COUNTY, FLORIDA
SHANTHI NIKETAN DEVELOPERS, LLC
2015-01-01

06P2000282
PLANNING
ARCHITECTURE
DATE: 11/20/15
BY: [Signature]
CHECKED: [Signature]
DATE: 11/20/15

SHEET
A-B
OF



REVISIONS
1
2
3
4
5
6
7
8
9
10

PROJ. NO. 31CF1501-01	DATE 11.20.15
--------------------------	------------------

SHANTIKETAN 3, A CONDOMINIUM
UNITS C-1, C-2, C-3, C-4, C-5, C-6, C-7, C-8, C-9, C-10, C-11, C-12
CITY OF HOUSTON, TEXAS
SHANTIKETAN DEVELOPERS, LLC
10000 HOUSTON ROAD, SUITE 100
HOUSTON, TEXAS 77036
P.O. BOX 10000
HOUSTON, TEXAS 77036

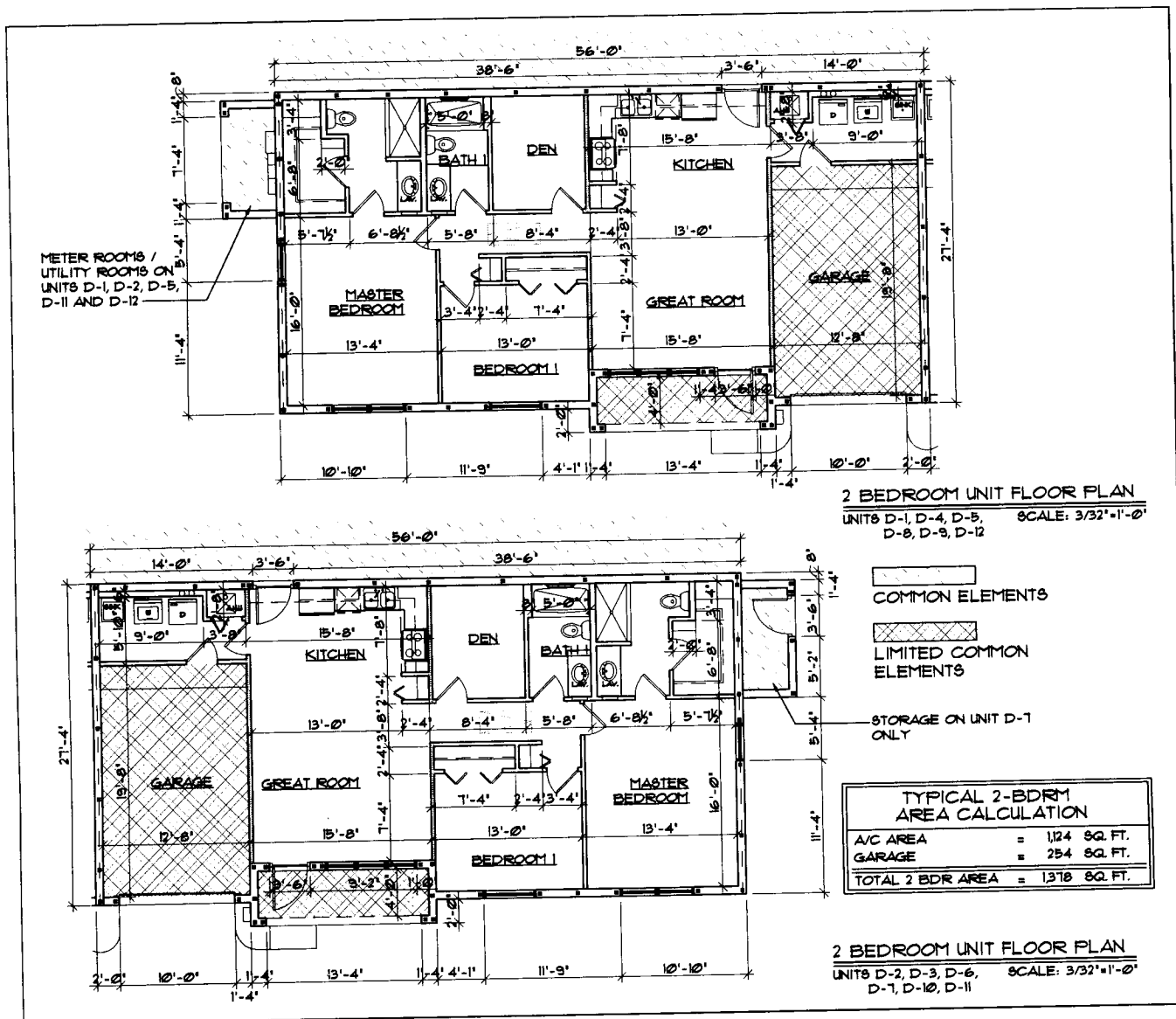
RABITS & ROMANO
ARCHITECTURE
PLANNING
DESIGN
12750 SANDY CREEK LANE, SUITE 100
HOUSTON, TEXAS 77036
P.O. BOX 10000
HOUSTON, TEXAS 77036

SHEET
F-8
OF



POINT OF BEGINNING.
CONTAINING 24433.36 SQUARE FEET OR 0.56 ACRES MORE OR LESS.
SUBJECT TO EASEMENTS, RIGHT OF WAYS AND MATTERS OF RECORD.

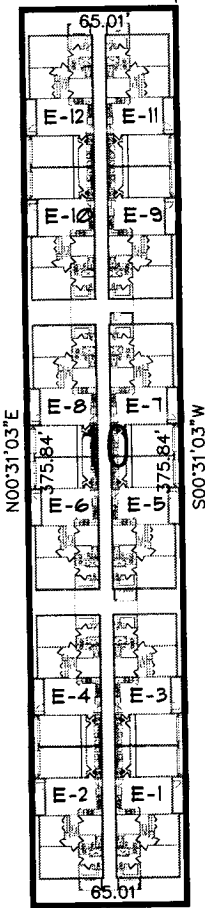
SHEET
4-9
OF



PROJ. NO.	31CT1501-01
DATE	11.20.15
BLANTIKETAN 3, A CONDOMINIUM SECTION 30, TOWN OF SOUTH BAY, Dade County, Florida BLANTIKETAN DEVELOPMENT, LLC 884 S. DIAMON DR., TAMPA, FLORIDA 33610 Ph: 813-288-0001 Email: info@blantiketan.com	
RABITS & ROMANO PLANNING AND ARCHITECTURE 10100 N. W. 11TH AVE., SUITE 110 MIAMI, FLORIDA 33157 Ph: 305-551-1111 Email: info@rabitsandromano.com	
SHEET T-9 OF	

P.O.B.
PHASE 10

S89°28'57"E



FLLOT PLAN

N89°28'57"W

SCALE: 1"=60'

PHASE 10

WING E

THAT PORTION OF THE LANDS DESCRIBED IN OFFICIAL RECORDS BOOK 4619, PAGES 1709 THROUGH 1719 PUBLIC RECORDS OF LAKE COUNTY, FLORIDA AND LYING IN SECTION 6, TOWNSHIP 20 SOUTH, RANGE 26 EAST, LAKE COUNTY, FLORIDA, DESCRIBED AS FOLLOWS:

COMMENCE AT THE NORTHWEST CORNER OF SAID SECTION 6 AS SHOWN ON THE FLORIDA DEPARTMENT OF ENVIRONMENTAL PROTECTION CERTIFIED CORNER RECORD NUMBER 073101, ON FILE WITH THE FLORIDA DEPARTMENT OF ENVIRONMENTAL PROTECTION, TALLAHASSEE, FLORIDA; THENCE RUN ON A BEARING RELATED TO FLORIDA STATE PLANE COORDINATES SYSTEM, EAST ZONE, S 00°59'22" W ALONG THE WEST LINE OF THE NORTHWEST 1/4 OF SAID SECTION 6, A DISTANCE OF 1591.90 FEET TO THE BEGINNING POINT OF SHANTI NIKETAN SENIOR CONDOS PHASE 3; THENCE RUN N 89°28'57" W ALONG THE NORTH LINE OF SAID PHASE 3 A DISTANCE OF 33.13 FEET TO THE NORTHWEST CORNER OF SAID PHASE 3; THENCE RUN S 01°00'00" W ALONG THE WEST LINE OF SAID PHASE 3 AND THE WEST LINE OF AFORESAID LANDS DESCRIBED IN OFFICIAL RECORDS BOOK 4619, PAGES 1709 THROUGH 1719, A DISTANCE OF 40.23 FEET; THENCE DEPARTING SAID WEST LINE RUN S 89°28'57" E A DISTANCE OF 51.79 FEET TO THE POINT OF BEGINNING; THENCE CONTINUE S 89°28'57" E A DISTANCE OF 65.01 FEET; THENCE RUN S 00°31'03" W A DISTANCE OF 375.84 FEET; THENCE RUN N 89°28'57" W A DISTANCE OF 65.01 FEET; THENCE RUN N 00°31'03" E A DISTANCE OF 375.84 FEET TO THE POINT OF BEGINNING.

CONTAINING 24433.36 SQUARE FEET OR 0.56 ACRES MORE OR LESS.
SUBJECT TO EASEMENTS, RIGHT OF WAYS AND MATTERS OF RECORD.

PHASE 10 - WING E AREA CALCULATION

TYP. 2 BDR UNIT A/C AREA	=	1124	SQ. FT.
TYP. 2 BDR UNIT GARAGE	=	254	SQ. FT.
TYP. 2 BDR UNIT TOTAL AREA	=	1378	SQ. FT.

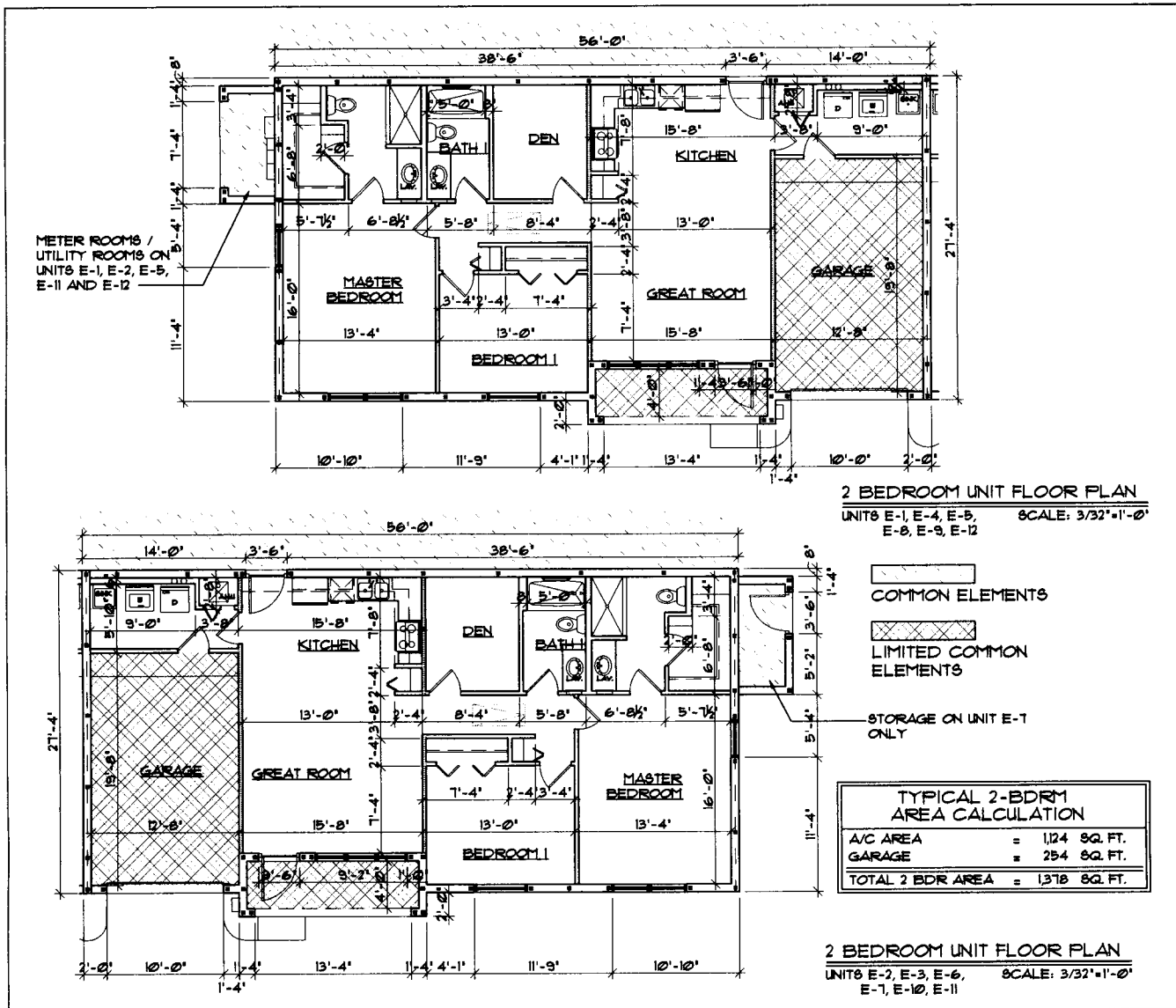
REVISIONS
1
2
3
4
5
6
7
8
9
10

PROJ. NO.	5101501-01
DATE	11/20/15

SHANTINIKETAN 3, A CONDOMINIUM
SECTION 06, TOWNSHIP 20 SOUTH, RANGE 26 EAST
LAKE COUNTY, FLORIDA
SHANTI NIKETAN DEVELOPERS, LLC
554 S. DUNCAN DR., TALLAHASSEE, FLORIDA 32310
TEL: (904) 244-8665 FAX: (904) 244-8666

RABITS & ROMANO ARCHITECTURE
PLANNING
DESIGN
AND
CONSTRUCTION
1111 N. W. 11th Ave., Suite 1100
TALLAHASSEE, FLORIDA 32310
TEL: (904) 244-8665 FAX: (904) 244-8666

SHEET
A-10
OF



REVISIONS
1
2
3
4
5
6
7
8
9
10

PROJ. NO.	31071501-01
DATE	11.20.15

SHANTINIKETAN 3, A CONDOMINIUM
SECTION 25, TOWNSHIP 24 NORTH, RANGE 12 WEST
SALANT NIKETAN DEVELOPMENT, LLC
10000 100th Avenue, Suite 100, Minneapolis, MN 55438
TEL: (612) 338-1111 FAX: (612) 338-1112

067200232VAV
PLANNING
ARCHITECTURE
DESIGN
10000 100th Avenue, Suite 100, Minneapolis, MN 55438
TEL: (612) 338-1111 FAX: (612) 338-1112

SHEET
F-10
OF